


And what the land developers think about spatial information?

Isto Huvila
Department of ALM | Uppsala University
@ihuvila | www.istohuvila.se



Archaeological Information in the Digital Society
<http://www.abm.uu.se/research/Ongoing+Research+Projects/ARKDIS/>

Archaeological Practices
And Knowledge Work
In The Digital Environment



cost-action - CA15201

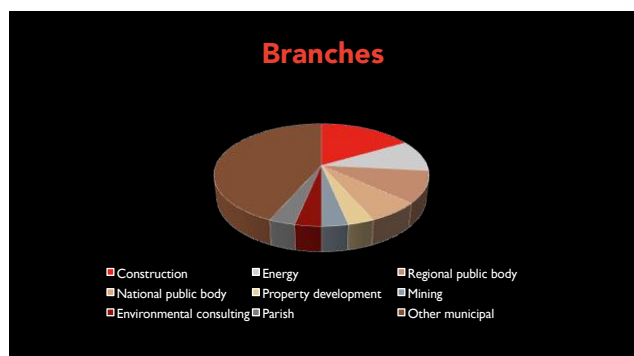
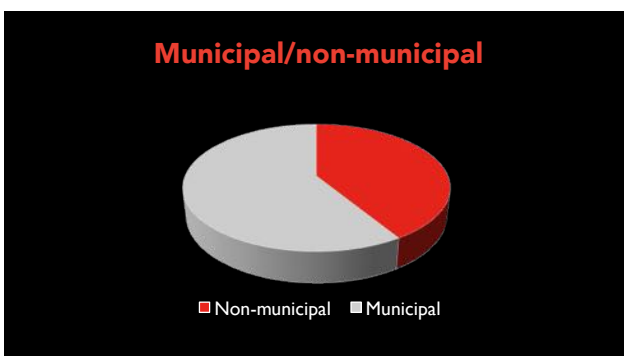
ARKWORK

- Organises training schools, workshops and conferences
- Supports research visits through short term scientific missions
- Brings newest research results to you
- Is your link to the state-of-art in archaeological practices and knowledge work



www.arkwork.eu | #costarkwork

Survey of 34 Finnish and Swedish land developers.



Administrative, spatial, scientific information from fieldwork.

De Roo, B., Bourgeois, J., & De Maeyer, P. (2016). Information flows as bases for archaeology-specific geodata infrastructures: an exploratory study in Flanders. JASIST, 67(8), 1928–1942.

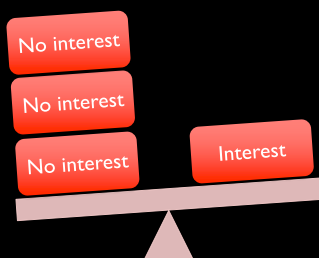
GIS data is important.

Wishlist

- 1) Boundaries directly on a map
- 2) Detailed information
- 3) Exactness and reliability
- 4) (Directly) usable file formats

Problems

- 1) Bad or uneven quality of (CAD) drawings
- 2) Access to GIS data (especially in Finland)
- 3) Lack of direct access to spatial data
- 4) Lack of a single access point to spatial data



Opportunity of threat: Social contacts as a central information source.

Huvila, I.
**Land developers and archaeological
information**
Open Information Science, 2017, 1, 71-90.

Open access at <https://doi.org/10.1515/opis-2017-0006>

**And what the land developers think
about spatial information?**

Isto Huvila
Department of ALM | Uppsala University
@ihuvila | www.istohuvila.se
firstname.lastname@abm.uu.se